



5kW FPD Surgical C-
arm

Garion



Experience The Difference

Fine-Tuned Movement 5kW FPD Surgical C-arm



Garion is a compact and versatile digital surgery system.
It is aimed to help you save space and improve work efficiency.
It has minimal post-sales expenditures.

Garion for complete satisfaction

Garion is equipped with a high resolution FPD.

Its composition, along with other components such as positive/negative inversion, realtime zoom & rotation, as well as advanced noise reduction and optimized contrast/brightness, guarantees much clearer and enhanced image quality.

Attachable Grid

The Grid can be attached and detached, allowing low-dose examination for each part.

Dual Laser Pointer

Using the dual laser pointer, it is possible to set the patient's position without unnecessary exposure.

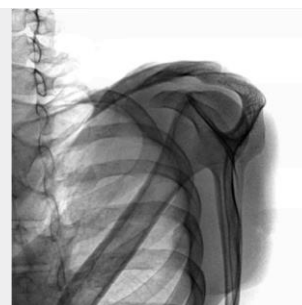
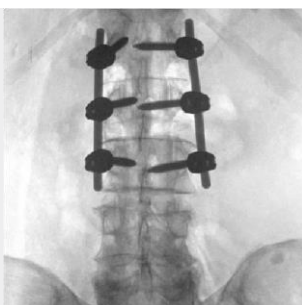
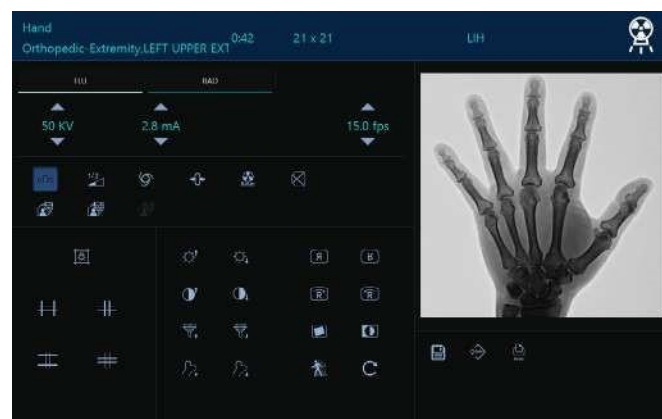


1. Software

Powerful Digital Image Processing and Display

Whatever the surgical and clinical environment is, you will benefit from the most optimized output.

The combination of Dynamic FPD means that Garion provides the highest quality on screen image. Our advanced image-processing technology enables you to utilize various functions such as image flip (horizontal & vertical), image rotation (360°), realtime zoom, noise reduction, and realtime edge enhancement, etc.



2. Specification

X-RAY GENERATOR

1) Power output		5.0 kW
2) Fluoroscopy		
- Continuous Mode	kV / mA range	40 ~ 110 kV / 0.3 ~ 6.3 mA
- Pulsed Mode	kV / mA range	40 ~ 125 kV / 0.3 ~ 32 mA
	Frame rate kV	1, 2, 5, 10, 15 fps
3) Radiography	/ mAs range	40 ~ 125 kV / 0.2 ~ 100 mAs

X-RAY TUBE

1) Anode Type	Rotating Anode
2) Anode Heat Capacity	200 kHU
3) Focal Spot	0.3 / 0.6 mm

DETECTOR

1) Sensor Panel Technology	a-Si:TFT with direct dep. Csl
2) Active Area	209.9 x 209.9 mm
3) Matrix Size	1,024 x 1,024 pixels
4) Pixel Pitch	205 µm

GEOMETRY

1) Rotation	Orbital	150°
	Pivot	360°(±180)
	Swing	30°(±15)
2) Movement	Vertical	200 mm
	Horizontal	400 mm
3) Depth		640 mm
4) Free Space		784 mm
5) SID		980 mm

WORKSTATION

1) CPU	Intel Core i5 6GEN
2) Memory	16 GB
3) Hard Disk	1 TB
4) UPS	60 Min. (Load 90 W)

MONITORS

Power Supply Time

1) Workstation Display	19" x 2	2) Operation Display	24" Touch
------------------------	---------	----------------------	-----------

※ Note : Specifications subject to change without notice.